



# SAP EWM **Advanced** **Embedded Packaging** **Specification**



SAP Knowledge Hub

We Are Here to Boost Your Career  
Corporate Training || Classroom Training || Outsourcing



[info@ambikeya.com](mailto:info@ambikeya.com) || [www.ambikeya.com](http://www.ambikeya.com) || +917746805189

## LESSON OVERVIEW

In this lesson, you will learn about configuring packing specifications. Packing specifications involve defining essential packaging attributes, materials, instructions, quantities, and other settings necessary for correctly packaging a product.

This lesson covers the following key aspects:

- Creating a new packaging specification.
- Displaying an existing packaging specification.
- Setting up packaging specification determination.

## LESSON OBJECTIVES

By the end of this lesson, you will be able to:

- Create packaging specifications.

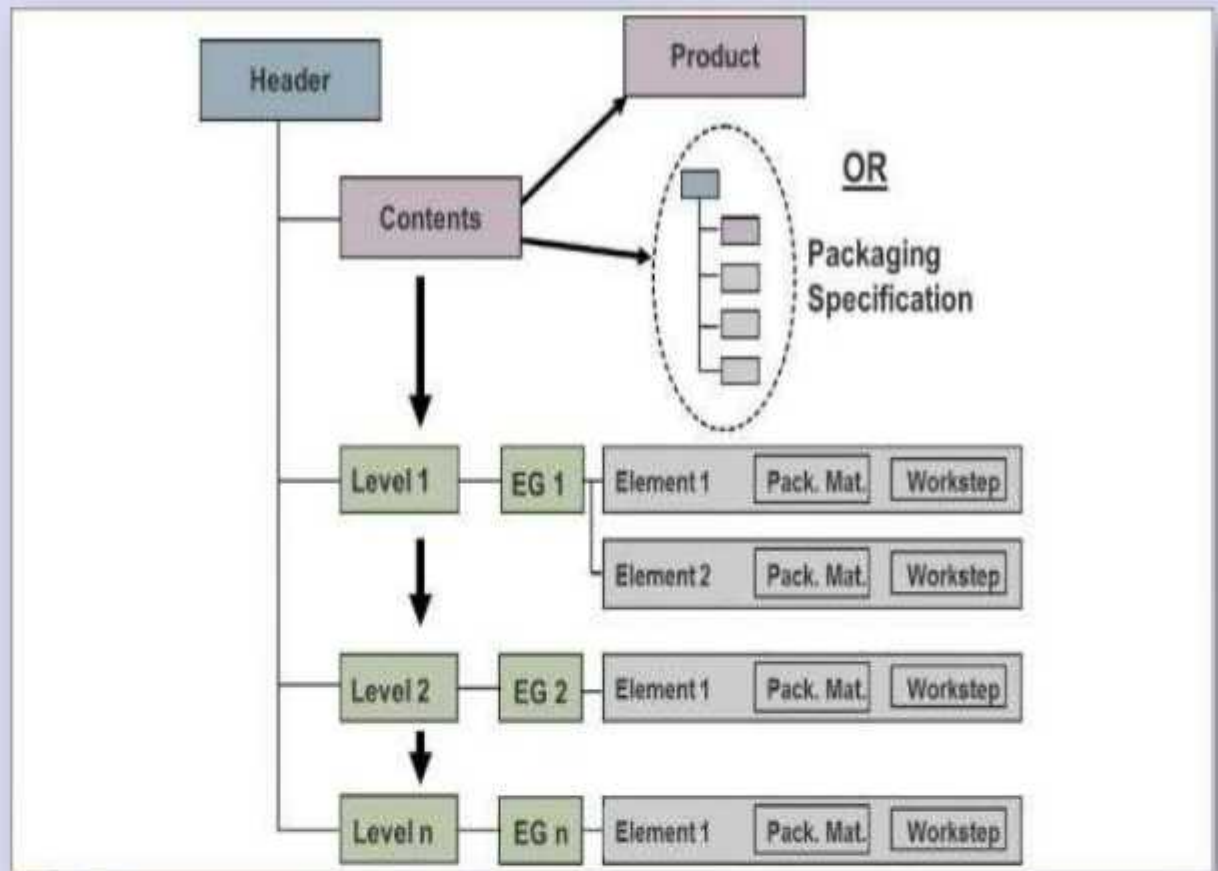
### Packaging Specification Structure

In the EWM (Extended Warehouse Management) master data, a packaging specification encompasses all the required packing levels for a product, along with the associated packaging materials and work procedures. The following figure provides an overview of the packaging specification structure.

A packaging instruction comprises the following structural components:

- **Header:** The header section contains details such as the name of the packaging specification, the user who created it, and the packaging status.
- **Contents:** Within the contents component, you'll find either the product to be packed or the name of another packaging specification.
- **Level:** A packaging specification can include one or more levels. The level component contains instructions for packing a preceding level. For Level 1, it includes instructions for packing the contents of this level.
- **Element Group:** Each level corresponds to one element group. An element group consists of one or more elements. Element groups can also be reused across

multiple packaging specifications.

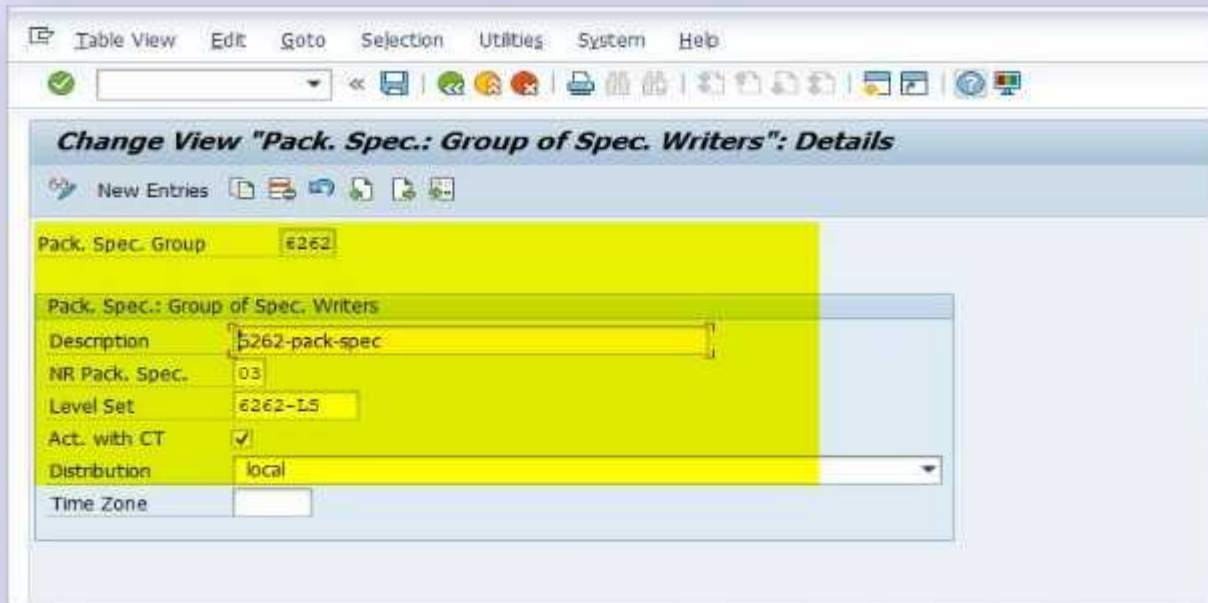


Define Number Range for Packaging Specification –

SPRO-SCM Extended Warehouse Management - Extended Warehouse Management -  
Master Data - Packaging Specification - Define Number Range for Packaging Specification







MAINTAIN STRUCTURE FOR PACKAGING MATERIAL Define Level Type -

Spro-SCM Extended Warehouse Management-Extended Warehouse Management-Master Data-

Packaging Specification- Maintain Structure of Packaging Specification- Define Level Type



Table View Edit Goto Sejection Utilities System Help

Change View "Level Type Definition": Details

New Entries

Level Type

Level Type Definition	
Description	6262-LEVEL1-AUX/HU
Level Quantity	available for input
Performing Ent.	not relevant
Qty Classific.	<input type="checkbox"/>
HU Type	<input type="text"/>
HU Crea.	<input type="checkbox"/>
External Step	<input type="text"/>
Deletion not allow.	<input checked="" type="checkbox"/>
Rounding-Relevant	<input type="checkbox"/>
Kitting	<input type="checkbox"/>
Icon	@OP@

Table View Edit Goto Sejection Utilities System Help

Change View "Level Type Definition": Details

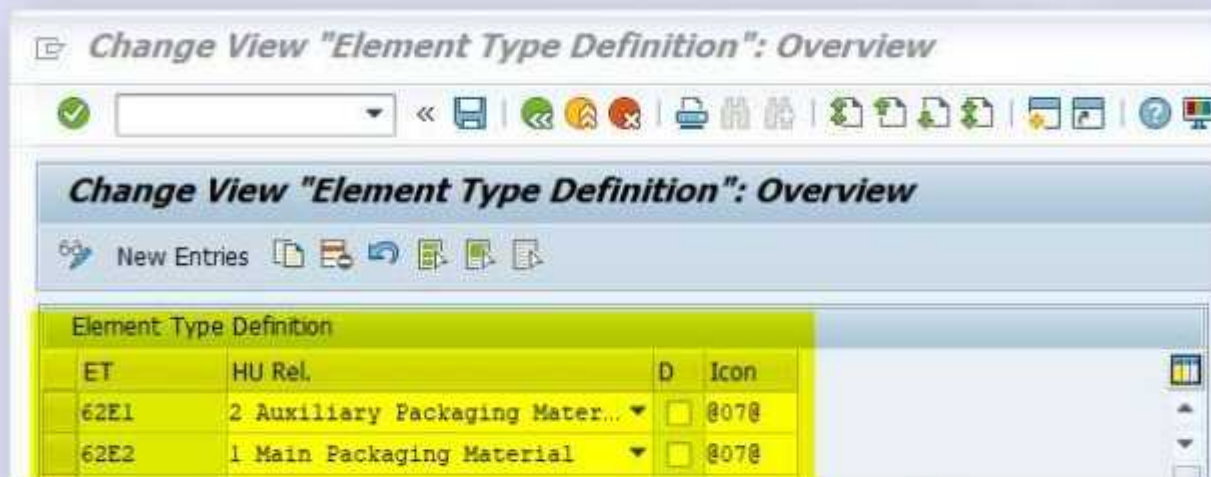
New Entries

Level Type

Level Type Definition	
Description	6262-LEVEL2-AUX-HU
Level Quantity	available for input
Performing Ent.	not relevant
Qty Classific.	<input type="checkbox"/>
HU Type	<input type="text"/>
HU Crea.	<input type="checkbox"/>
External Step	<input type="text"/>
Deletion not allow.	<input checked="" type="checkbox"/>
Rounding-Relevant	<input type="checkbox"/>
Kitting	<input type="checkbox"/>
Icon	@OP@

Define Element Type -

Spro-SCM Extended Warehouse Management-Extended Warehouse Management-Master Data-  
 Packaging Specification- Maintain Structure of Packaging Specification - Define Element Type



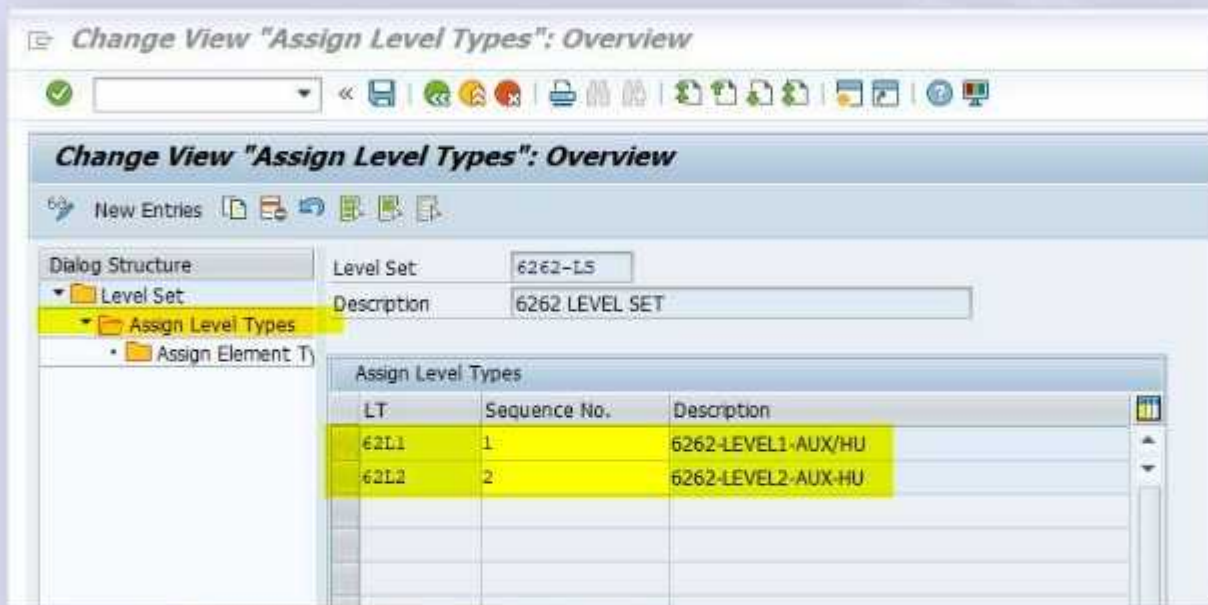
Define Level Set -

Spro-SCM Extended Warehouse Management-Extended Warehouse Management-Master Data-  
 Packaging Specification- Maintain Structure of Packaging Specification- Define Level set





Assign Level set to level Types -



Assign element type to this level type -



Table View Edit Goto Selection Utilities System Help

Change View "Assign Level Types": Overview

New Entries

Dialog Structure

- Level Set
  - Assign Level Types
    - Assign Element T

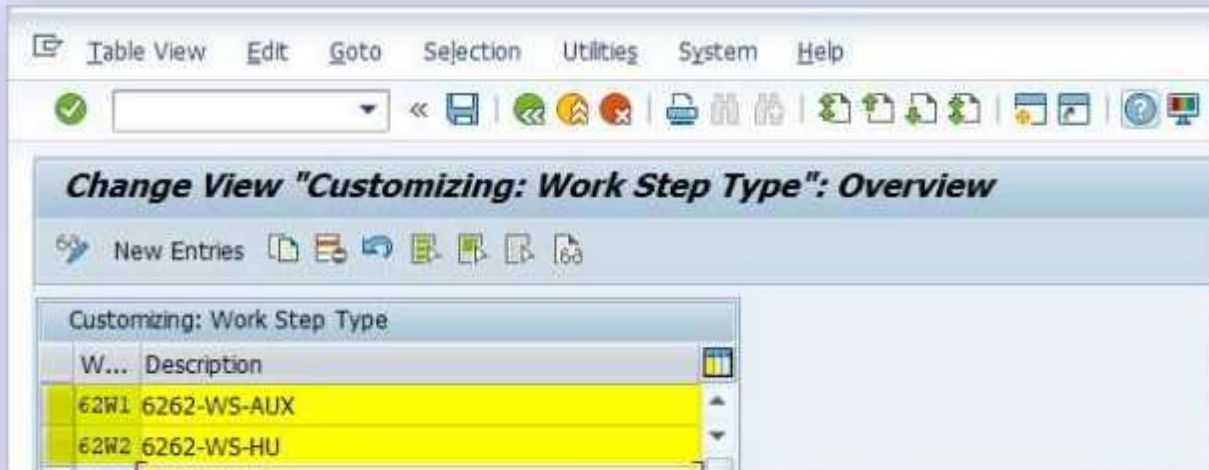
Level Set: 6262-LS  
 Description: 6262 LEVEL SET

Assign Level Types		
LT	Sequence No.	Description
62L1	1	6262-LEVEL1-AUX/HU
62L2	2	6262-LEVEL2-AUX-HU

Define Work Step Type -

Spro-SCM Extended Warehouse Management-Extended Warehouse Management-Master Data-

Packaging Specification- Maintain Structure of Packaging Specification - Define Work Step Type



Assign Packaging Material Type to Element Type -

Spro-SCM Extended Warehouse Management-Extended Warehouse Management-Master Data- Packaging Specification- Maintain Structure of Packaging Specification - Assign Packaging Material Type to Element Type



Assign Work Step Type to Packaging Material Type -

Spro-SCM Extended Warehouse Management-Extended Warehouse Management-Master Data- Packaging Specification- Maintain Structure of Packaging Specification -

Change View "Assign Work Step Type to Packaging Material Type": Overvi

Change View "Assign Work Step Type to Packaging Material Type": Overvi

New Entries

Assign Work Step Type to Packaging Material Type			
Pkgl...	Description	W...	Description
APCB	6262-CARTON	62W2	6262-WS-HU
APPL	6262-PALLATE	62W2	6262-WS-HU
APPX	6262-AUXILLARY	62W1	6262-WS-AUX

Now maintain the level set in packaging specification group -



Table View Edit Goto Selection Utilities System Help

Change View "Pack. Spec.: Group of Spec. Writers": Details

New Entries

Pack. Spec. Group: 6262

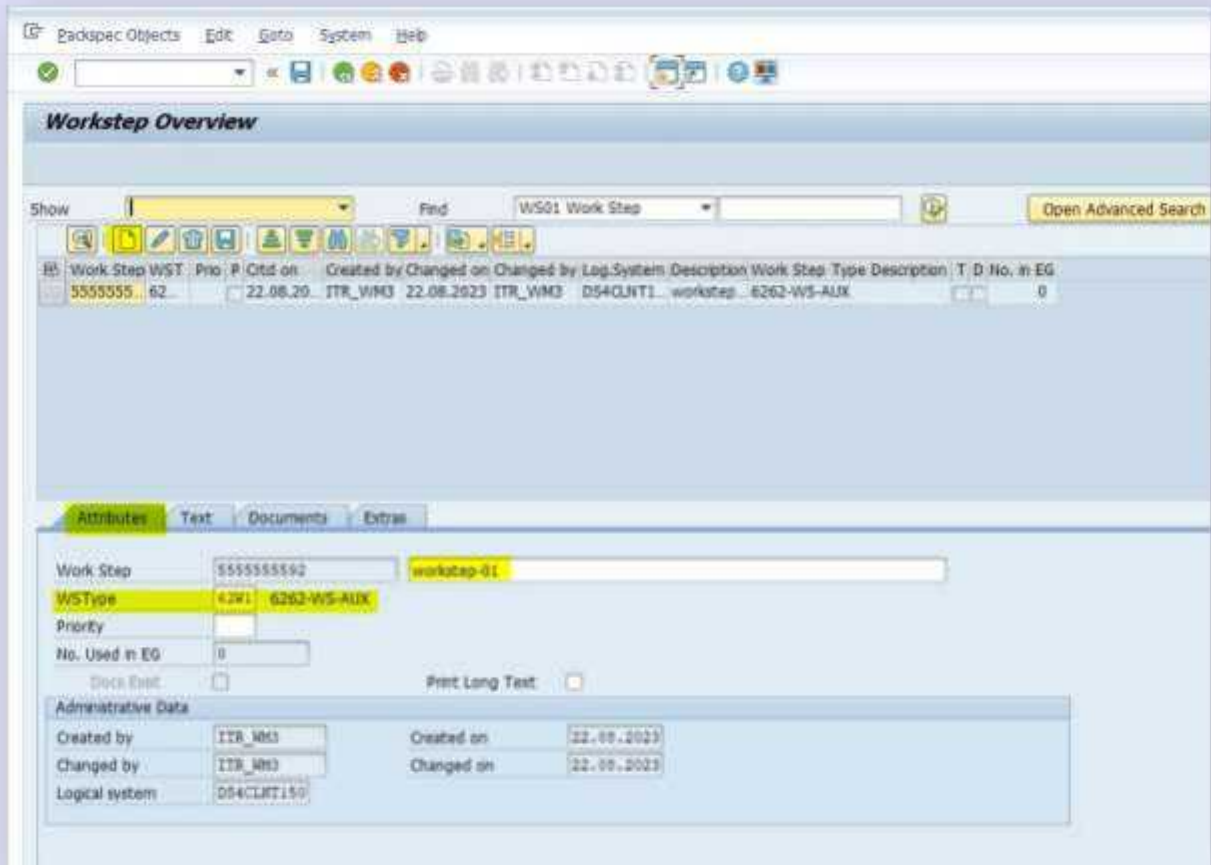
Pack. Spec.: Group of Spec. Writers	
Description	6262-pack-spec
NR Pack. Spec.	03
Level Set	6262-LS
Act. with CT	<input checked="" type="checkbox"/>
Distribution	local
Time Zone	

maintain one packaging work step and one level element group -

Easy access -Logistics-SCM Extended Warehouse Management-Extended Warehouse Management Master Data-Packaging Specification - Maintain Packaging Work Step

T-CODE - /SCWM/PSWORKSTEP - Maintain Packaging Work Step





Maintain level element group –

Easy access -Logistics-SCM Extended Warehouse Management-Extended Warehouse Management Master Data-Packaging Specification - Maintain level element group.

T-CODE - /SCWM/PSEG - Maintain Level Element Group

**Element Groups Overview**

Find: ELEMENTGROUP Ele... Open Advanced Search

Elem. Group	RU Ctd on	Created by	Changed on	Changed by	Log.System	Description	Used in PS
3333333370	22.08.20	ITR_WMG	22.08.2023	ITR_WMG	054CLNT1	Element ...	0

Element Group: 3333333370 Element group-01

Re-Usable Element Group:

Used in PS: 0

Administrative Data

Created by	ITR_WMG	Created on	22.08.2023
Changed by	ITR_WMG	Changed on	22.08.2023
Logical system	054CLNT150		

Create or maintain packaging specification - (T. Code - /N/SCWM/PACKSPEC)

**Packaging Specification Overview**

Find: PACKSPEC Packaging Sp... Open Advanced Search

Activate Create 2nd Version Mass Change 2nd Version

Packaging Specification	Status-Icon	Description	PS Group	PS Status	Det. Product	Act. at.	Change nr	Activated by	Level Set	Up.Lmt D.Q	Low
5555555593	⊙		6262	N			2		626245	0.000	

Change Packaging Specification 555555593 MAT1-A001

Change/Display

Packspec/Level/Elements | Product

- 555555593
  - Content
    - 6262-LEVEL1-AUX/HU
      - 6262-ELEMENT TYPE-01
      - 6262-ELEMENT TYPE-02
    - 6262-LEVEL2-AUX/HU
      - 6262-ELEMENT TYPE-01
      - 6262-ELEMENT TYPE-02

Product

Packaging Specification

Pack. Spec. 555555593 PS Status R New Change nr 2

Description MAT1-A001

Determination Org. Data Rounding Documents Add. Data

Item Area

IS	COIC	SC Unit	Product	Ship-from	Pack. Spec.	CS	Log. Onl.	Created By	Creat.	Table
080	5CB-6262		1400110	59901	555555593	1				SAPBD
080										SAPBD

Display Packaging Specification 555555593 MAT1-A001

Change/Display Delete HU Check Create 2nd Version Preview

Packspec/Level/Elements | Product

- 555555593
  - Content
    - 6262-LEVEL1-AUX/HU
      - 6262-ELEMENT TYPE-01
      - 6262-ELEMENT TYPE-02
    - 6262-LEVEL2-AUX/HU
      - 6262-ELEMENT TYPE-01
      - 6262-ELEMENT TYPE-02

Product

Packaging Specification

Pack. Spec. 555555593 PS Status A Active Change nr 1

Description MAT1-A001

Determination Org. Data Rounding Documents Add. Data

Item Area

IS	COIC	SC Unit	Product	Ship-from	Pack. Spec.	CS	Log. Onl.	Created By	Creat.	Table
080	5CJ-6262		1400110	59901	555555593	1		ITIL_WM3	22.0	SAPBD

Object(s) saved

# THANK YOU



- Corporate Training
- Instructor LED Training
- Seminars & Workshop Internship
- Mock Interview
- Customised Courses
- Project Support For Implementation
- Staff Augmentation And Talent



**SAP Knowledge Hub**